



# The Bean Pot News

Volume 3 Issue 5

September 2015

## What's New


### *Bean Pot Region & AACA Meets*

- Cadillac-LaSalle Club & Bean Pot - Tech Session - Saturday, Sept 12 - 10AM to 2PM
- Tech Session, Car Collection & Membership Meeting - Saturday, Sept 26 - 9AM to 2 PM
- Melmark NE Auto Show - Andover MA - Saturday, Oct 3, 2015 - 10AM to 2PM
- Hershey Region - National Fall Meet – Tuesday thru Saturday - Oct 6<sup>th</sup> - 10<sup>th</sup>
- Little Red School House Meet – Dunstable, MA - Saturday, Oct 17 - 10AM to 2PM

### *Invitational Meets*

- Boston Cup Concours – Boston Common – Sunday, Sept 20, 9AM to 2PM
- Revere Remembers the 50's & 60's Car Show Sunday, Sept 27, 2015 10AM to 2PM

*As always, check the website for late breaking changes, error corrections, rain dates, directions and additional details at [www.beanpotaaca.com](http://www.beanpotaaca.com) .*

Managing Committee			The Boston Northeast Region AACA
President / Judging	Bill Pappas	781-799-9574	
Vice President & Secretary	Doug Reinbold	508- 272-4151	
Past President	Sam Gagliano	978-273-9175	
Treasurer	Dan Cullinane	781-248-7410	
Director	Sam DeMarco	617-212-6708	
Director	Sandy Angus	781-710-4570	
Director	Ken Lemoine	508-259-6314	
Membership	Aleece Pappas	603-893-4702	
Website & Communications	John Burns	978-692-2370	

## President's Message

The summer is almost over but the Bean Pot Region is in full swing planning our fall events. This month we have a joint tech meet with the Cadillac LaSalle Club in Wilmington and a membership meeting and tech session in Norton at an early car collection. At this meet, I hope you will consider running for a position on the Board. In October, we have the AACA National Fall Meet in Hershey, PA and our own Little Red School House Meet in Dunstable, MA. See more details on all of these events in this newsletter. In addition, we will have a table at the prestigious Boston Cup on September 20th to promote our club. Please feel free to stop by and enjoy the show.

In August, our club participated in the Ride for Kids to benefit the Pediatric Brain Tumor Foundation. The event was held at the Bose Corporation Headquarters in Framingham. Despite the rainy weather in most of the area, the event was a successful fundraiser and we have been invited to return next year. I would like the club to continue to be involved with charity events. We have partnered with Melmark New England to hold a car show fundraiser at their facility on river road in Andover, MA on October



3<sup>rd</sup>. We are hoping this will be a big event. Our club sponsor East Boston Savings Bank has already stepped up with a donation to the school. More information about the Melmark show in this newsletter.

Club shirt samples have been made up with our logo and are we will have some available at the next several Bean Pot Meets and we will also be able to take orders. Thanks to John Trotter for making our first edition club shirts a reality.

Check our website often to keep up to date with past and future events. Our award winning website is meticulously maintained by our webmaster John Burns. I would love to see a great turnout at our remaining meets this year. It depends on commitment from our membership to keep us functioning as an active and healthy AACA regional club now and in the future. As always, feel free to contact me with any input you have on our club, my cell (781) 799-9574 or at vasselios@gmail.com.

*Bill Pappas*

### ***Bean Pot Region & AACA Current Calendar of Events***

It is a goal of the club to at a minimum have 6 Newsletters and 6 General membership meetings during the calendar year. Listed below is a current list of events planned for 2015. As always, check the [www.beanpotaaca.com](http://www.beanpotaaca.com) website for additional events along with latest changes and details.

- **NE Cad LaSalle Club & Bean Pot Tech Session - Wilmington, MA**  
Saturday, Sep 12, 2015 - 10AM to 2PM
- **Tech Session, Car Collection & Membership Meeting - Norton MA**  
Saturday, Sept 26, 2015 9AM to 2PM
- **Melmark NE Auto Show - Andover MA – invited and assisting Melmark NE**  
Saturday, Oct 3, 2015 10AM to 2PM
- **Hershey Region AACA - National Fall Meet -Hershey PA**  
Tuesday - Saturday October 6 - 10, 2015
- **Bean Pot - Little Red School House Meet - Dunstable MA**  
Saturday, Oct 17, 2015 - 10AM to 2PM

*We also have several invitational meets this fall.*

- **The Boston Cup - Boston Common - Boston MA – invited by The Boston Cup**  
Sunday, September 20, 2015 9 AM - 2 PM
- **Revere Remembers the 50's & 60's Car Show – invited by The North Shore Old Car Club**  
Sunday, Sept 27, 2015 10AM to 2PM

----- Note: The Event details listings that follow are in chronological order. -----

### ***Meet & Tech Session with the NE Cadillac LaSalle Club***

***Peter Telis - 166 Salem Street - Wilmington, MA***

***Saturday, September 12<sup>th</sup> 10AM - 2PM Rain Date is Sunday Sept 13<sup>th</sup>***

FREE multi car club event with the NE Region of the Cadillac LaSalle Club. Peter Telis will host the event at his home in Wilmington, MA. We will share expenses with the NECLC. Coffee, Pastries & Donuts all day with lunch supplied around noontime. One car of our choice will be put on the car lift and we will conduct a undercarriage safety evaluation tech session, from 11am until lunchtime. We will have a 50/50 raffle all day with the benefits to support Autism.



## ***The Boston Cup - Invitational***

***Boston Common - Parkman Bandstand - Boston, MA***

***Sunday, September 20, 2015 9AM to 2PM***

The vehicles selected for the Boston Cup are from six different countries. Cars are arranged on the show field by county of origin for display purposes. Vehicle dates range from the early 1900's to a few current models. Many are super rare classic and race cars, and they range in condition from Concours winners to un-restored fresh barn finds. The Bean Pot Region will have a table set up to promote membership.

## ***Membership Meeting, Early Car Collection & Tech Session***

***Dean & Pat Zwicker's Barn - 9 Clapp St - Norton, MA***

***Saturday, September 26, 2015 10AM to 2PM***

Meet at 10:00 AM on Saturday, September 26, 2015 at Dean and Pat Zwicker's barn at 9 Clapp Street in Norton. It will be a club meeting as well as a technical seminar where Dean will speak about some of Dean & Pat's vehicles in the collection as well as a showing of the automobilia collection that he has. We will have coffee, pastries and donuts prior to the meeting and then order pizza for after the meeting.

### **Directions from Interstate 495**

- Take Exit 11 (Norton, Route 140 South)
- Go 2.8 miles to Traffic Lights (Intersection of Rt. 140 and Rt. 123)
- Take a left and 1st Right back on to Route 140 South (Taunton, New Bedford)
- Go 3/10 mile and at funeral home sign on Route 140, take a Left on to Clapp Street
- The Zwicker's barn is the second driveway on the right

## ***Revere Remembers the 50's & 60's - Invitational***

***Susan B. Anthony School - 107 Newhall Street - Revere, MA 02151***

***September 27, 2015 10AM to 2PM***

***Free Barbecue 11AM to 1PM***

John Adrien, President of the North Shore Old Car Club, has invited the membership of the Bean Pot Region AACA to the "Revere Remembers the 50's & 60's" car show. Mayor Rizzo and the Revere Recreational Department are sponsoring this event.

There will be a FREE Barbecue that consists of hamburgers, hotdogs & sausages along with free drinks, popcorn and cotton candy. First place, people's choice wins a local gift card. Car owners Please pre-register by calling the Recreation Office at (781) 286-8190. View the flyer on the Bean Pot Website.

This looks like a very nicely organized event that the membership should enjoy on hopefully a fine fall day. Many thanks to the North Shore Old Car Club for inviting us.



## ***Melmark New England - Car Show***

***Melmark School - 461 River Road - Andover, MA***

***Saturday, October 3, 2015 10AM to 2PM Rain or Shine***

A group of Bean Pot Region AACA members have volunteered and partnered with Melmark New England to help them stage their first car show. The event will benefit the Melmark School, which provides education, and support programs for autistic children. The **East Boston Savings Bank** has stepped up to support their efforts with a donation to the school. **EBSB** will also be providing the great goodie bags to car owners. Thanks so much to the great people at EBSB for their support and help. Please consider them for your banking needs, contact them at [www.evsb.com](http://www.evsb.com).



This event is open to all antique and classic vehicle owners, you need not be a member of the Bean Pot Region to attend. There is also no age limit on show cars. Call Bill Pappas at 781-799-9574 for further information. There is no admission fee for spectators or participants but donations to the school will be gratefully accepted. There also will be popular choice awards, family activities and food will be available.



To view the Melmark NE school website go to [www.melmarkne.org](http://www.melmarkne.org)

### **Directions**

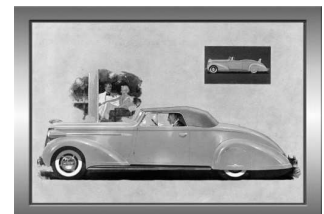
- ❑ Take exit 39 from I-495
- ❑ Follow MA-133 W/Andover St and Fiske St to River Rd in Andover 1.6 m
- ❑ (For those familiar with the area, the school is located next door to the former St. Francis Seminary location.)

## ***2015 AACA Eastern Regional Fall Meet Hershey, PA***

***Tuesday through Saturday - October 6<sup>th</sup> thru October 10<sup>th</sup>, 2015***

Visit the “Events” section in the Bean Pot website for convenient links to the following Hershey information.

- ❑ **Hershey Region AACA - Website**
- ❑ **FALL MEET 2015: Brochure & Flyer**
- ❑ **FALL MEET 2015: Maps, Information, & Aerial Photos**
- ❑ **FALL MEET 2015: Hershey Region Event Schedule**





## *Little Red School House Meet*

*Tyngsboro-Dunstable Historical Society's Little Red School House & Field  
Route 113 - 64 Main Street - Dunstable, MA 01827*

*Saturday, October 17, 2015 - 10 AM - 2 PM (Rain Date Sunday, October 18, 2015)*

This event, held on Saturday the week after Hershey is designed to help us get over the fact that end of the old car season is fast approaching and maybe it's time to put the old cars and trucks away for the winter. On the bright side it's a great time to be in New England and the foliage is near its at peak. This is the third annual event and we have consistently received extremely positive feedback from the attendees of the past two meets.

We again have made arrangements with the Tyngsborough - Dunstable, MA Historical Society to hold our car meet at the Little Red Schoolhouse in Dunstable, MA. This is an original,

authentically restored 1798 one room school house that is complete with bench chairs and wood stove placed on a very large beautiful location amid farms and country background. It is conveniently located off major highways and roads and can accommodate as many old cars, new cars, trailers or whatever you decide to bring or show. We will have an optional foliage tour of about 15 miles for those who are interested, through some of the scenic back roads of Dunstable, Tyngsboro and Westford.

The meet is a No-Charge get together is for both members and non-members. We also have plenty of parking for spectators. Coffee & Donuts, Beans, Franks, Hamburgers, will be available for purchase prepared and served by the Historical Society Members. Plan to arrive at the School House at 10:00 AM or a little earlier for coffee and donuts. You can also bring along your own picnic lunch to tailgate if you prefer.

If the weather doesn't cooperate, we have secured the location for the next day (Sunday) as a rain or bad weather date. If it is just cold, we will still hold the meet on Saturday. The old school house is weather tight and has a wood burning stove to keep everyone warm and protected from bad weather. We will be posting any updated and cancellation information on the club's website. For further information or questions email [info@BeanPotAACA.com](mailto:info@BeanPotAACA.com) or call 978 692 9440.

### **Directions**

- ❑ The Little Red School House is located on Route 113 in Dunstable, MA.
- ❑ From **Interstate 495** take Exit 35 for Route 3 North towards Nashua, NH
- ❑ Travel 8.7 Miles on Route 3 North
- ❑ Take Exit 35 for (Route 113) from Route 3 and head west towards Dunstable, MA.
- ❑ The Little Red School House will be 1.1 Miles on your left. Look for the sign.

Even though the Little Red School House does not have an official street address, for those using a mapping program or a GPS device the address 64 Main Street, Dunstable, MA. 01827 will get you to the right location.





## *NE Ride for Kids - Car Show - BOSE Corp - Recap*

### *Sunday August 23, 2015*

With most of the region socked in with a drizzly rain for the entire day Sunday we only had a couple of cars turn out for the car show. However, the car show location was free of rain for just about the whole day with just one short period of drizzle. The organizers were most gracious in understanding that car collectors do not take their cars out in the rain. The motorcycle turnout was also way down. In spite of the weather, the Ride for Kids raised over 40,000 for the day.

### *Remembrances*

Bean Pot member **Steven J. Pini** of Wakefield, MA passed away on September 1, 2015. Our sincerest condolences go out to his family and many friends. Steve and his 1954 Chevrolet Bel Air Sport Coupe was a familiar sight at many antique car events.

**Jim Raines** of Davidson, North Carolina passed away on August 14, 2105. Jim was a Past President of the Antique Automobile Club of America. He was a member of the Brass-Nickel Touring Region, Buzzard's Breath Touring Region, and the Hornet's Nest Region of the AACA, and as a result had many friends in all parts of the country. Jim was a great help in assisting the founders of the Bean Pot Region get the region up and running with much sage advice and assistance. He will be sorely missed by his many friends in the old car community.

### *Membership Information*

For new members joining after July 1, 2015 the dues **will include 2016 membership as well**. Full information and the membership form are available for printout on the club website. To submit an application for membership, go to the website, print out an application, and mail it with a check. You must be a National AACA Member to Join the Bean Pot Region.

### *Bean Pot Website*

Note that many of the events listed in the Newsletter have additional information including; maps, photographs, flyers and videos on the club website at [www.beanpotaaca.com](http://www.beanpotaaca.com) in both “**Events**”, “**Past Events**” and “**Photographs**” sections of the website.

In the “**Links**” section of the website, a new addition is a link to the “**Linwood Street Galleries**”. The **Linwood Street** galleries are updated just about every week during the car show season and feature excellent photography. The galleries provide a photographic reference to car shows and cruises starting in 2006 through the present.

The link to the **MAAC (Maynard Antique Auto Club) Events List** is a very handy way to verify upcoming New England shows and cruise nights, and it is updated just about every day. It also includes Florida events in the winter months.

Two other sites that are linked on the Bean Pot website are “**Old Car Brochures**” and “**Classic Car Catalog**” both of which are great sites for researching and identifying vehicles. **Old Car Brochures** has over 50,000 pages of high-resolution images from original auto brochures from America and Canada and it also has many pages of original auto manufacturer’s manuals. Website navigation can be difficult at times, but if you poke around you can find just about every make, model and year of car. **Classic Car Catalog** features worldwide images of cars mostly from brochures or advertisements from 1930 to 1969 indexed by either make or year. Caution some pages are in a foreign language.